

Environmental considerations in mental health research

Sandro Galea

Boston University School of Public Health



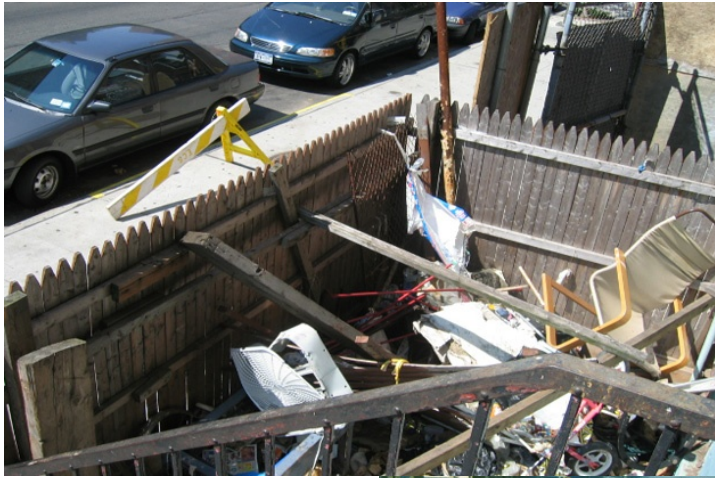


THE BRAIN INITIATIVE

Advancing Our Understanding Of The Brain

Why might we think the environment matters for mental health?

Intuition



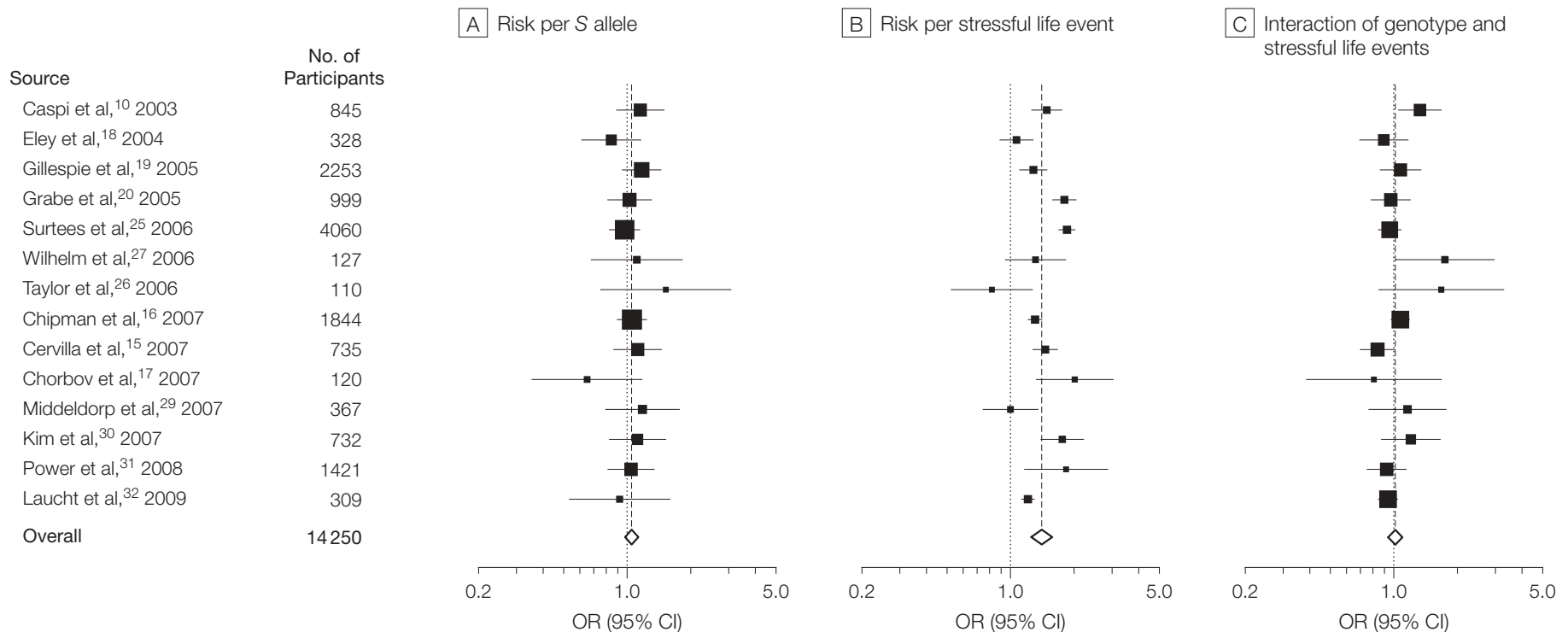
Concepts



Interaction Between the Serotonin Transporter Gene (*5-HTTLPR*), Stressful Life Events, and Risk of Depression

A Meta-analysis

Figure 2. Logistic Regression Analyses of Risk of Depression for 14 Studies



The boxes and lines indicate the odds ratios (ORs) and their 95% confidence intervals (CIs) on a log scale for each study. The size of the box indicates the relative weight of each estimate.

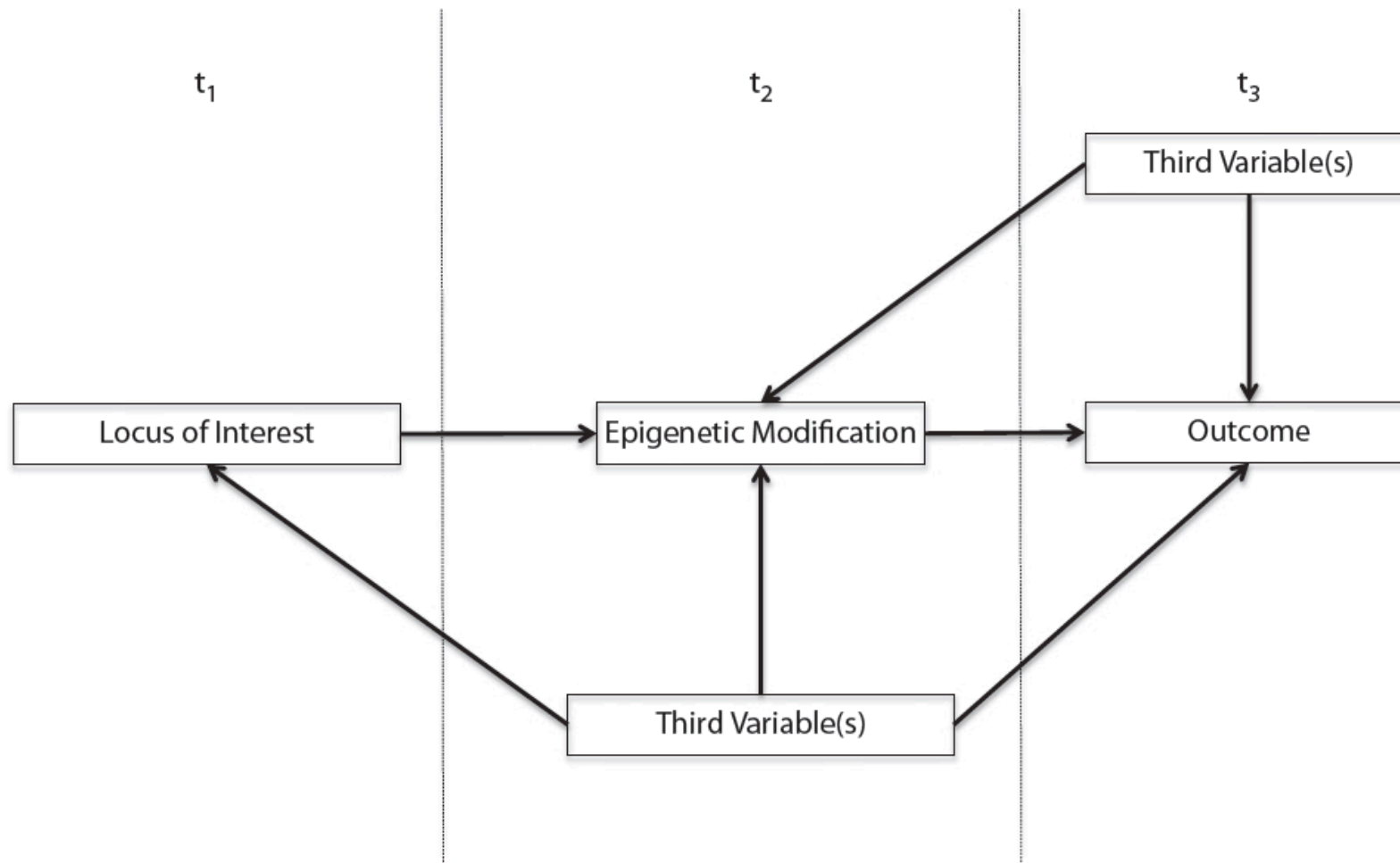
ORIGINAL ARTICLE

A mega-analysis of genome-wide association studies for major depressive disorder

Major Depressive Disorder Working Group of the Psychiatric GWAS Consortium¹

Prior genome-wide association studies (GWAS) of major depressive disorder (MDD) have met with limited success. We sought to increase statistical power to detect disease loci by conducting a GWAS mega-analysis for MDD. In the MDD discovery phase, we analyzed more than 1.2 million autosomal and X chromosome single-nucleotide polymorphisms (SNPs) in 18 759 independent and unrelated subjects of recent European ancestry (9240 MDD cases and 9519 controls). In the MDD replication phase, we evaluated 554 SNPs in independent samples (6783 MDD cases and 50 695 controls). We also conducted a cross-disorder meta-analysis using 819 autosomal SNPs with $P < 0.0001$ for either MDD or the Psychiatric GWAS Consortium

“ Although this is the largest genome-wide analysis of MDD yet conducted...we were unable to identify robust and replicable findings ”



Note. t_1 = time 1; t_2 = time 2; t_3 = time 3. Support of epigenetic hypotheses requires measurement at three time points, and third variables that might confound relationships among loci, epigenetic modification, and outcomes should be measured at the second and third time points and adjusted for appropriately in analyses.

FIGURE 1—Epigenetic modification as a mediator between genetic factors and outcomes and associated confounders.

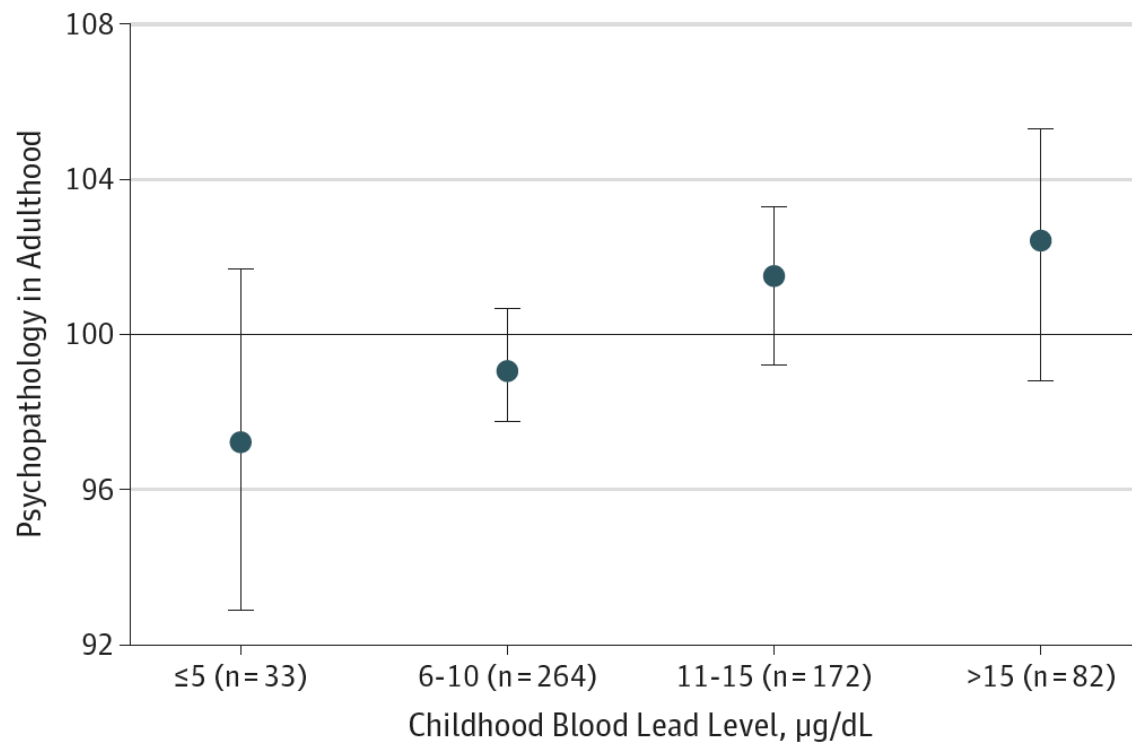
Evidence

1. Pathogens
2. Disruptions
3. Form

A photograph of an industrial facility, likely a power plant or refinery, with numerous smokestacks emitting thick, dark plumes of smoke that rise into the sky. The scene is set against a dramatic sunset or sunrise sky, with warm orange and red hues. In the foreground, a dark road with light trails from moving vehicles is visible, and a fence line runs across the middle ground.

1. Environmental pathogens

Figure 2. Association of Childhood Blood Lead Level at 11 Years of Age With Adult General Psychopathology at 38 Years of Age (Unadjusted for Covariates)



The mean general psychopathology scores (circles) in adulthood with 95% CIs (error bars) by childhood blood lead level are shown. Each 5-µg/dL-higher level of blood lead in childhood was associated with an additional 1.49-point higher score (95% CI, 0.22-2.77; $P = .02$) in adult general psychopathology on a scale standardized to a mean (SD) of 100 (15) (horizontal line). Of the 579 study members with childhood blood lead level measured, 551 (95.2%) also had present data on all the covariates and the psychopathology outcome measures.

Results: The results of all selected studies showed statistically significant associations between daily hospital admissions and ED visits for mental disorders and daily levels of some or all air pollutants considered, including particulate matter (PM) of variable sizes (in micrometers given in subscripts; PM_{2.5} and PM₁₀), sulfur dioxide, carbon monoxide, nitrogen oxide, and ozone. The strongest and more consistent evidence across studies was found for PM_{2.5} and PM₁₀.

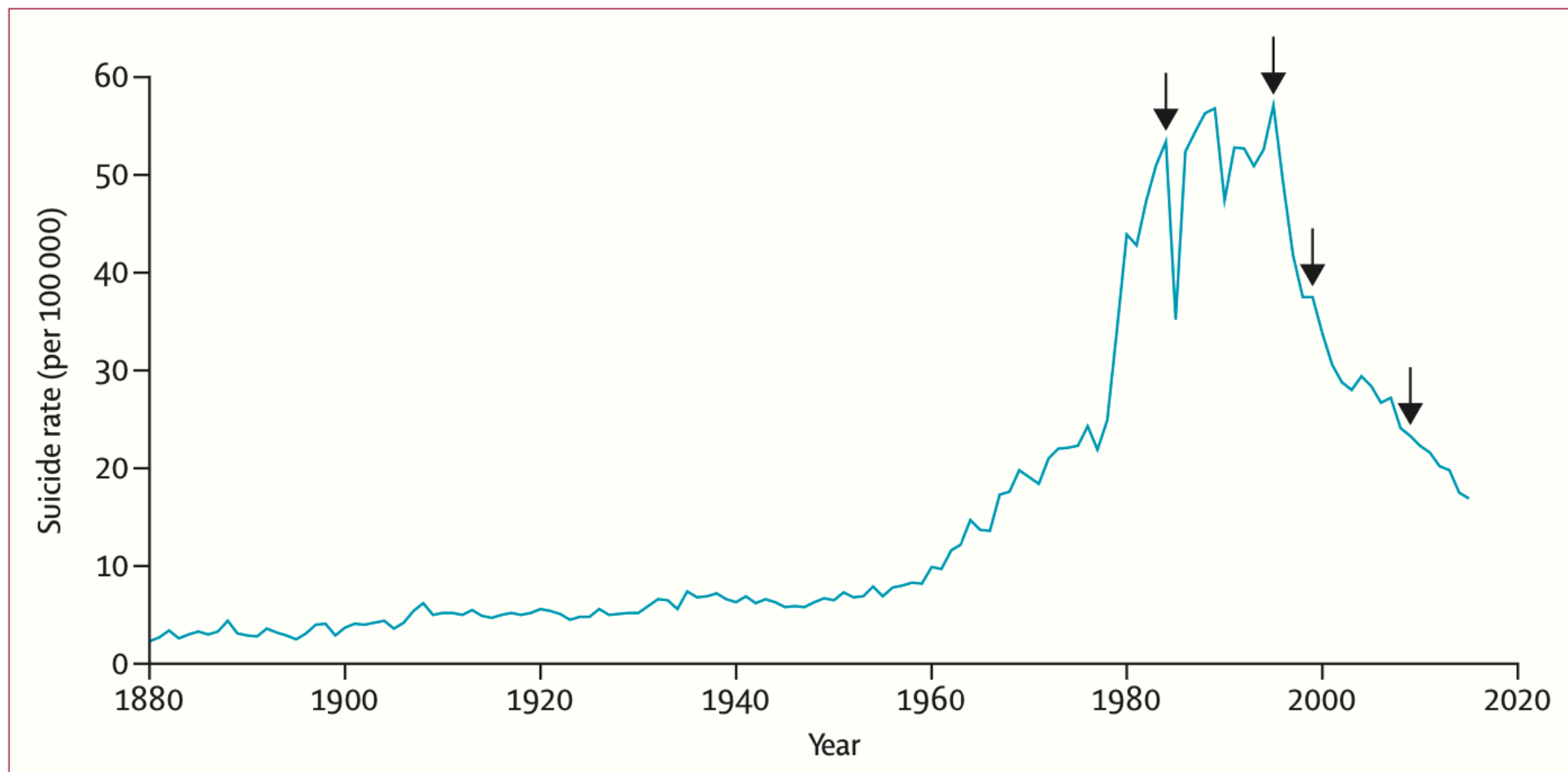


Figure 1: Overall suicide rate in Sri Lanka, 1880–2015

Arrows show timing of pesticide bans in 1984 (parathion and methylparathion), 1995 (all remaining WHO class 1 toxicity pesticides, including methamidophos and monocrotophos), 1998 (endosulfan), and 2008 (dimethoate, fenthion, and paraquat). Suicide data were obtained from police records. Reproduced with permission from Knipe et al.¹⁷

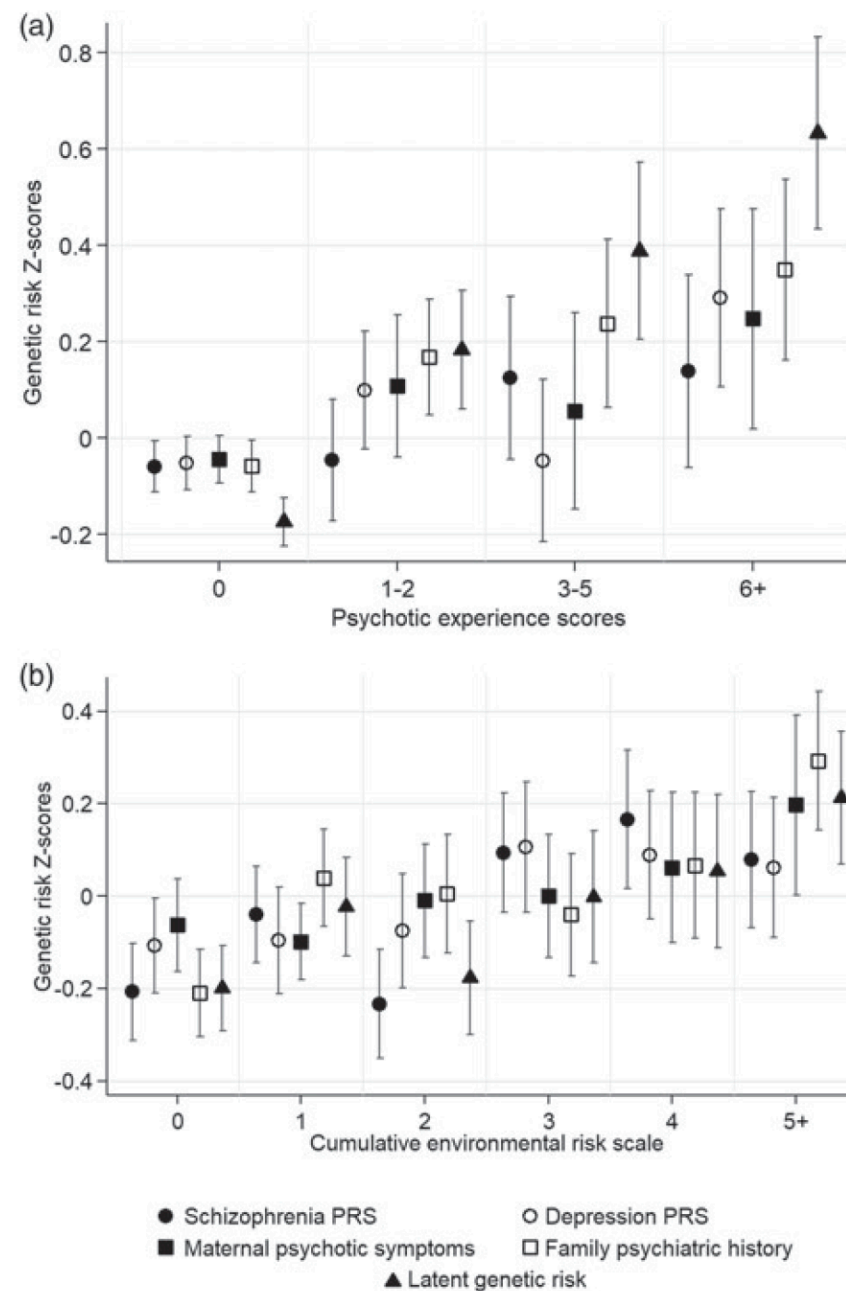


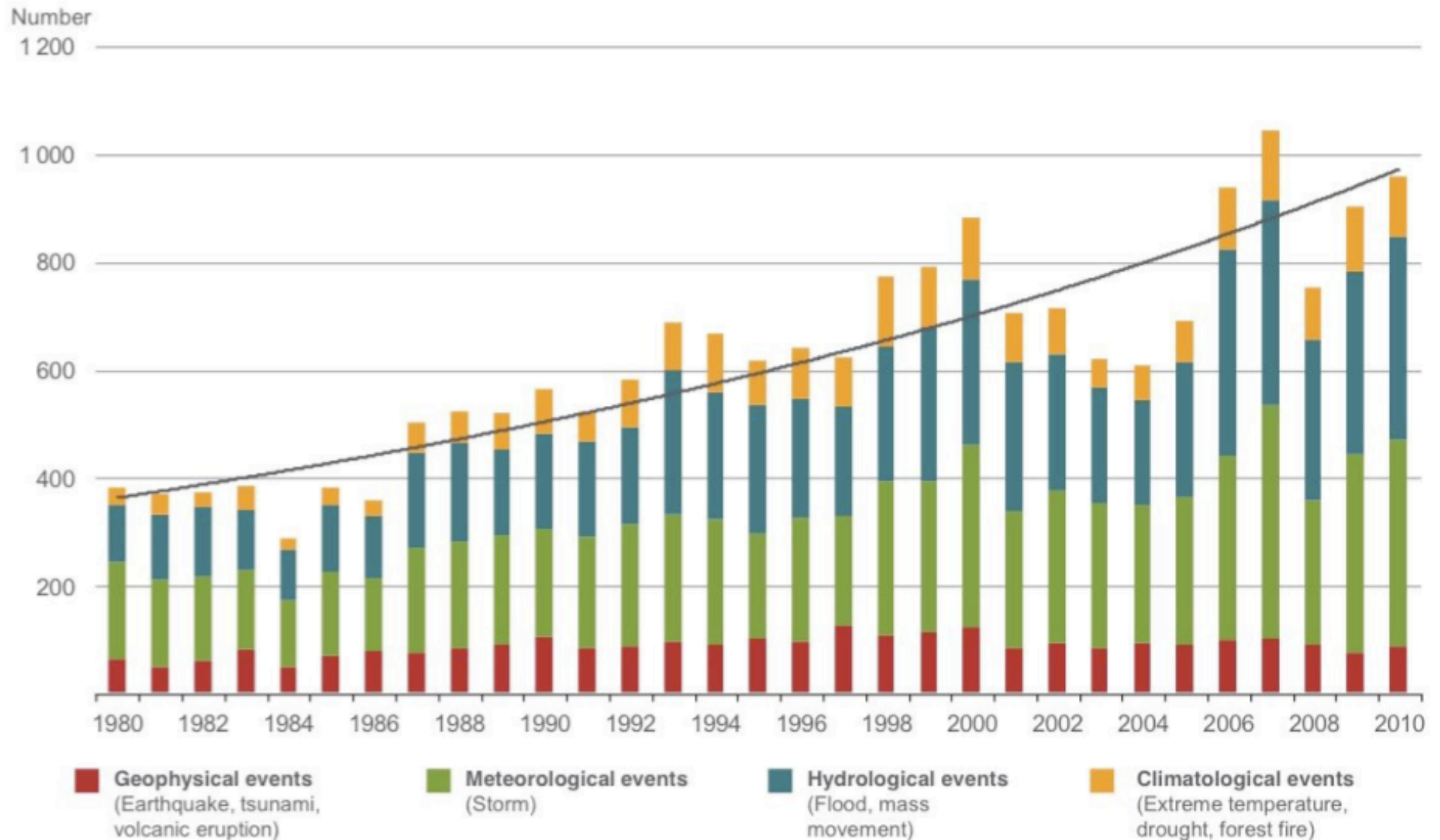
Fig. 2. Genetic risk Z-scores and 95% confidence intervals (indicated by double-headed lines) across (a) adolescent psychotic experiences scores, and (b) the cumulative environmental risk scale. Note: PRS, polygenic risk score.



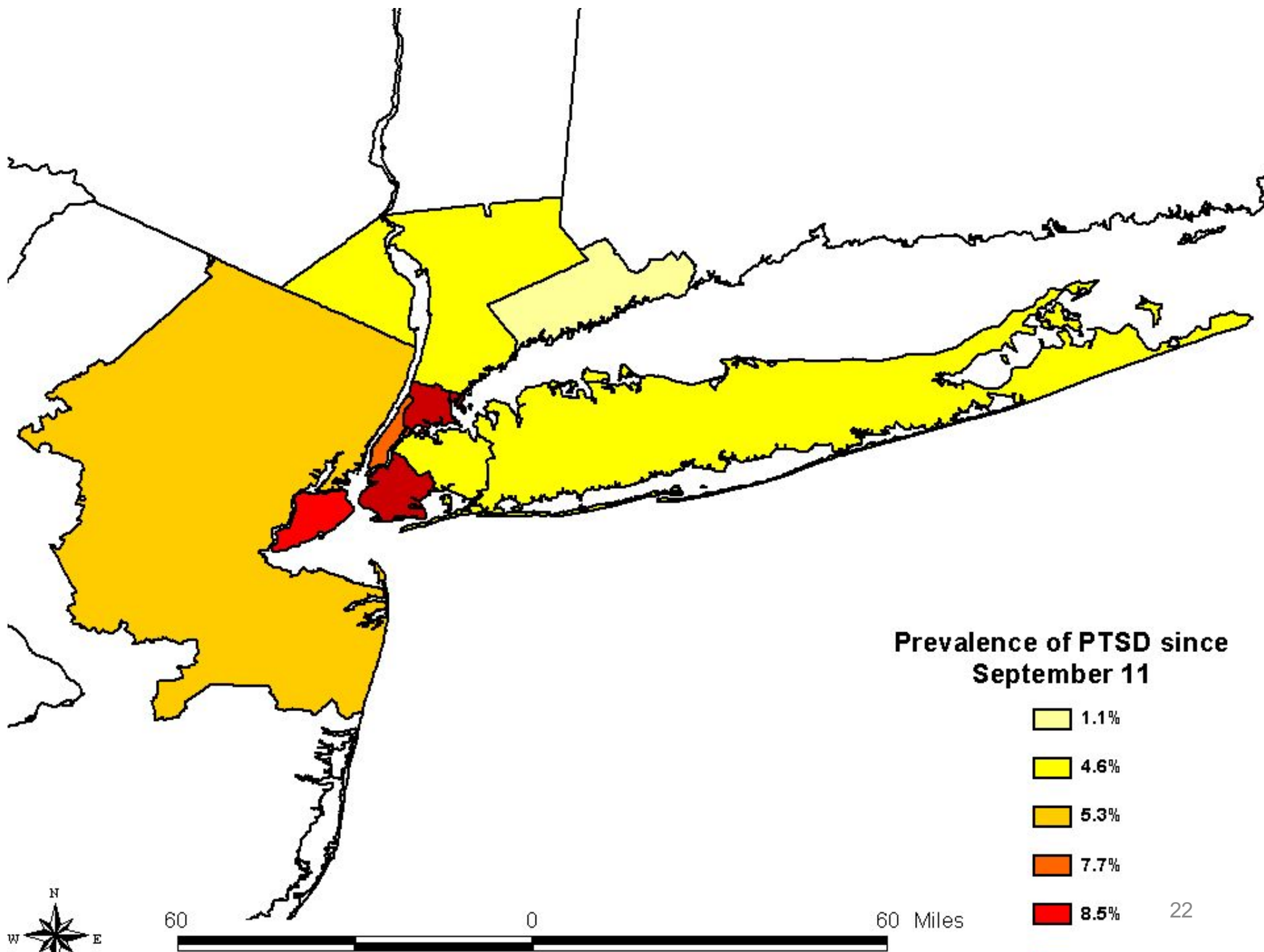
2. Environmental disruptions

“ A traumatic event is an experience that causes physical, emotional, psychological distress, or harm. It is an event that is perceived and experienced as a threat to one's safety or to the stability of one's world. ”

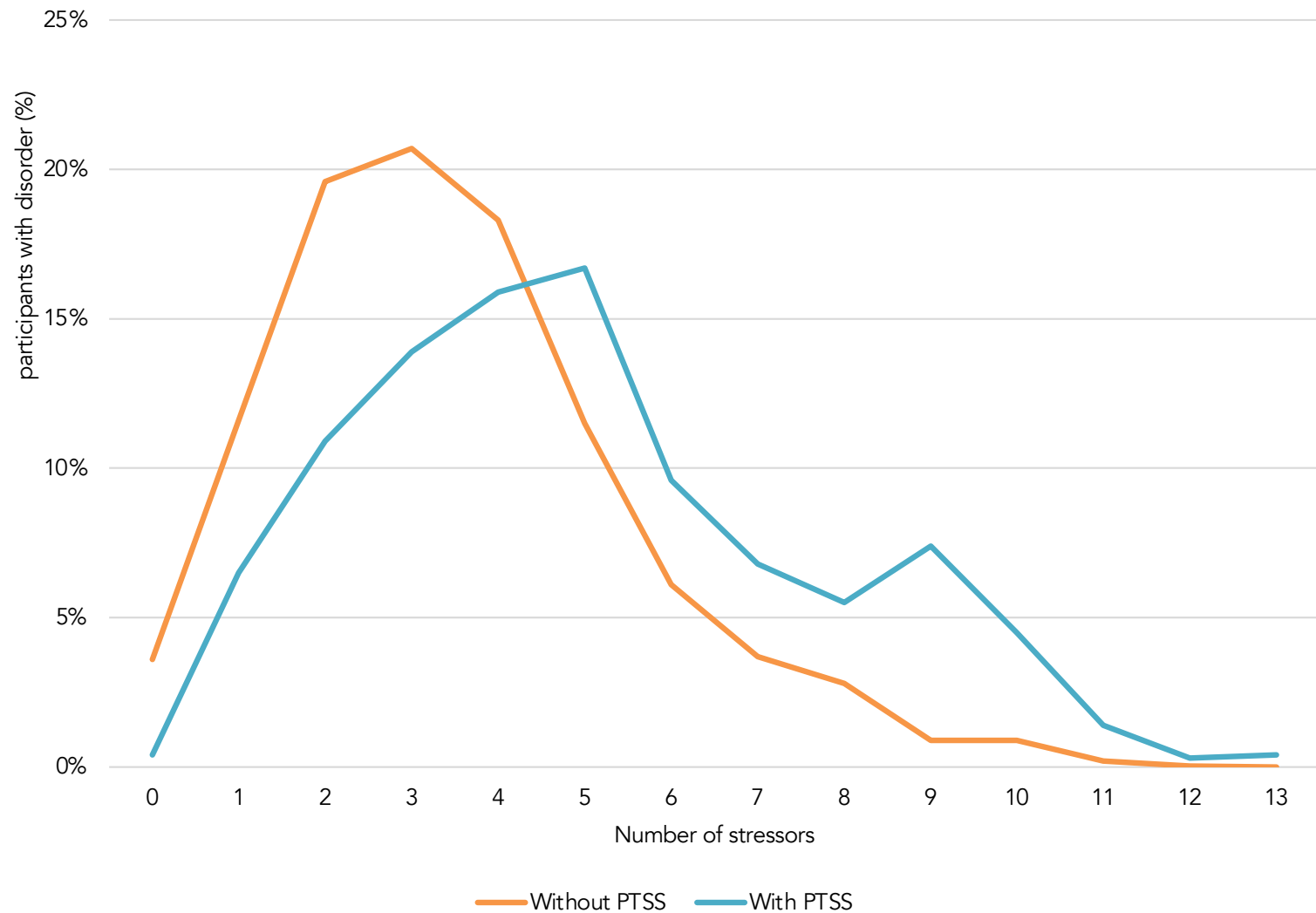
Number of natural disasters worldwide



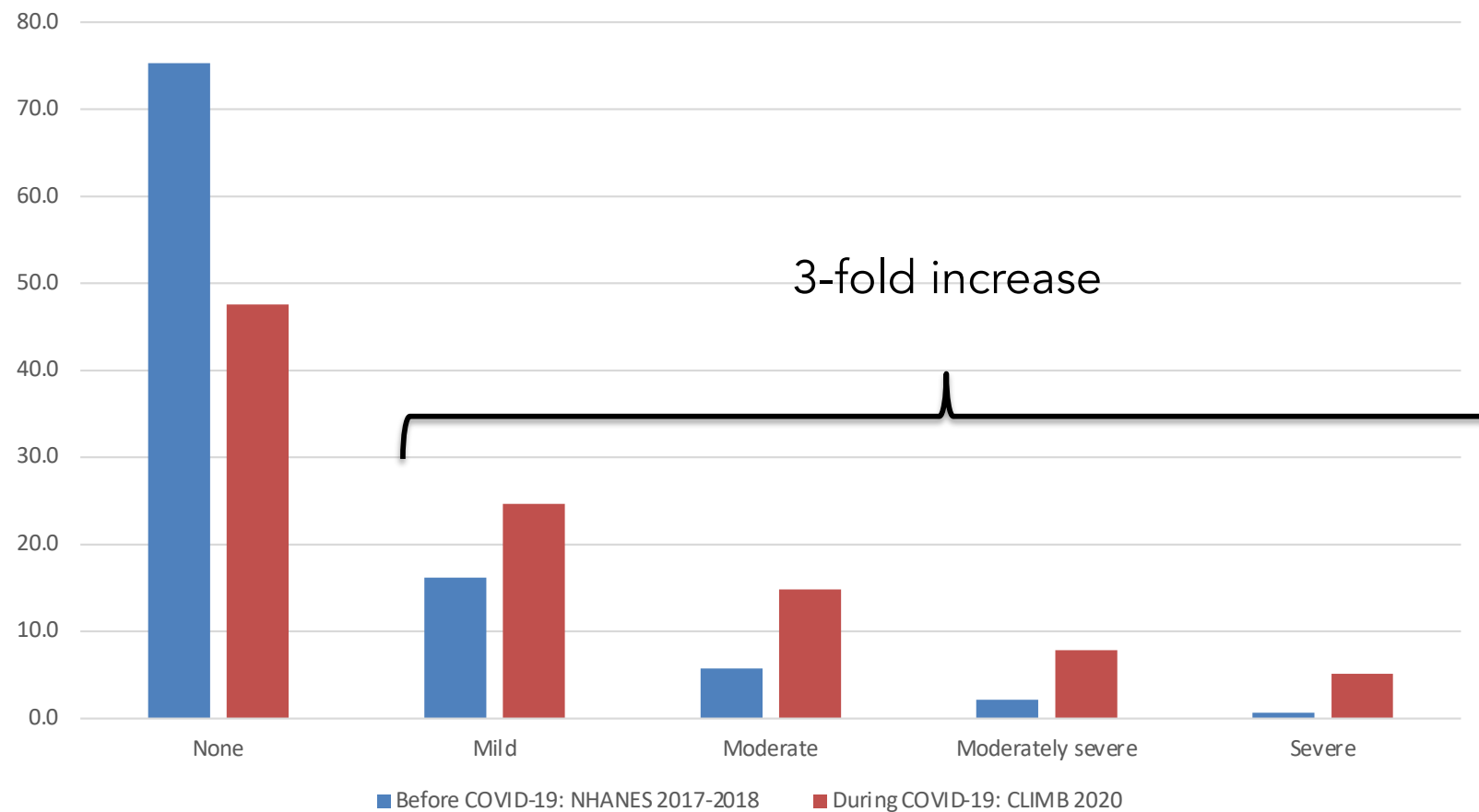
Adapted from: Munich Re (2010) "Topics Geo natural catastrophes 2009: Analyses, assessments, positions." Munich: Munich Reinsurance Company, by Jennings, S. "Time's Bitter Flood: Trends in the number of reported natural disasters." Oxfam Research Report 2011.



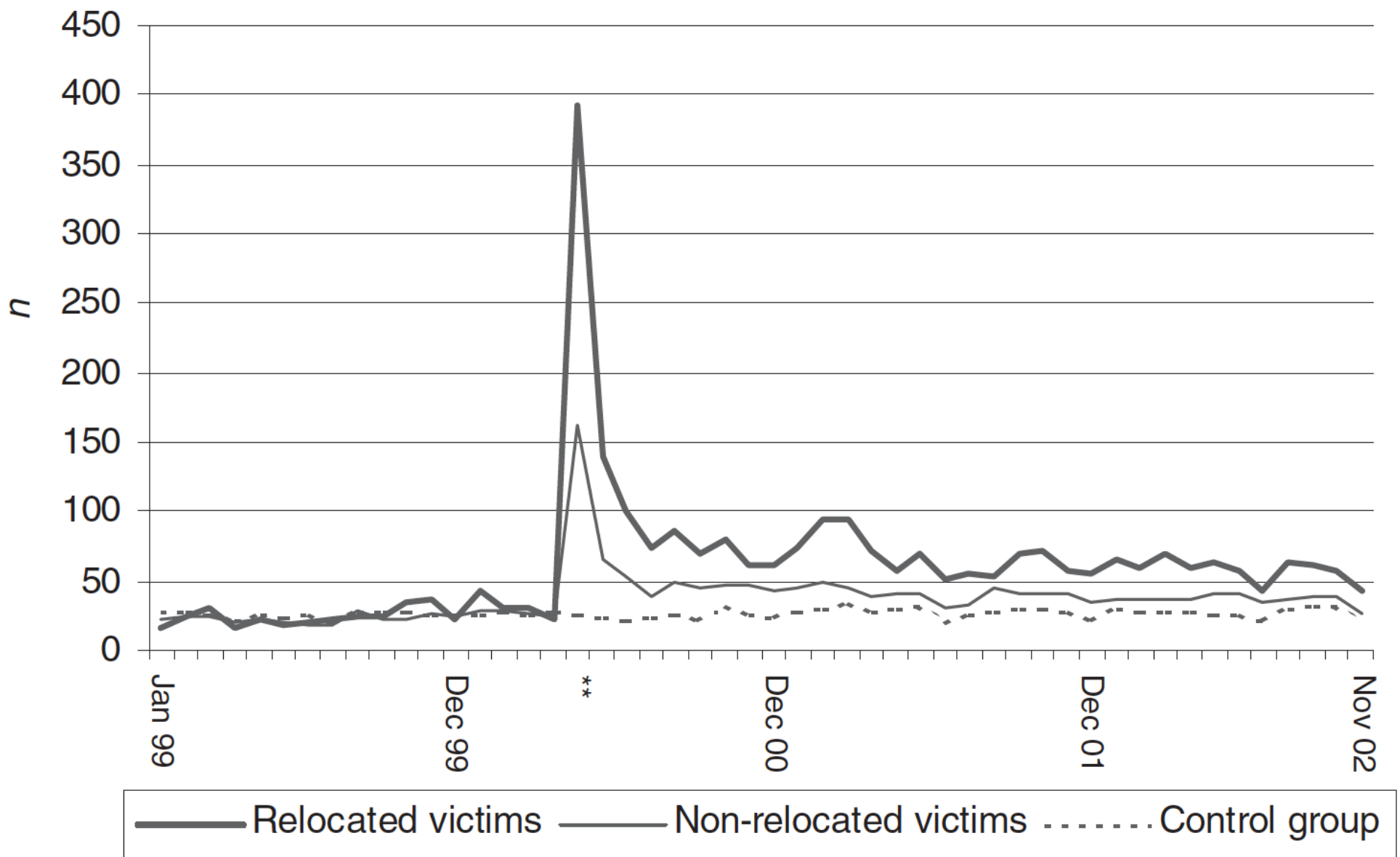
Distribution of total number of COVID-19 stressors by post-traumatic stress symptom status



Depression symptoms in U.S. adults before and during the COVID-19 pandemic



Note: Before COVID-19 estimates from the National Health and Nutrition Examination Survey (NHANES) from 2017-2018 (N=5065). During COVID-19 estimates from the COVID-19 and Life stressors Impact on Mental Health and Well-being Study (CLIMB) collected from March 31, 2020 to April 13, 2020 (N=1441). Depression symptoms categories calculated using the Patient Health Questionnaire-9 (PHQ-9): none (0-4), mild (5-9), moderate (10-14), moderately severe (15-19), and severe (≥ 20). Percentages weighted to the U.S. adult 18 years or older population. Ettman CK, Abdalla SM, Cohen GH, Sampson L, Vivier PM, Galea S. Prevalence of depression symptoms in US. adults before and during the COVID-19 pandemic. JAMA Network Open 2020; 3(9): e2019686. <https://doi:10.1001/jamanetworkopen.2020.20104>



**Date of disaster.

3. Environmental form

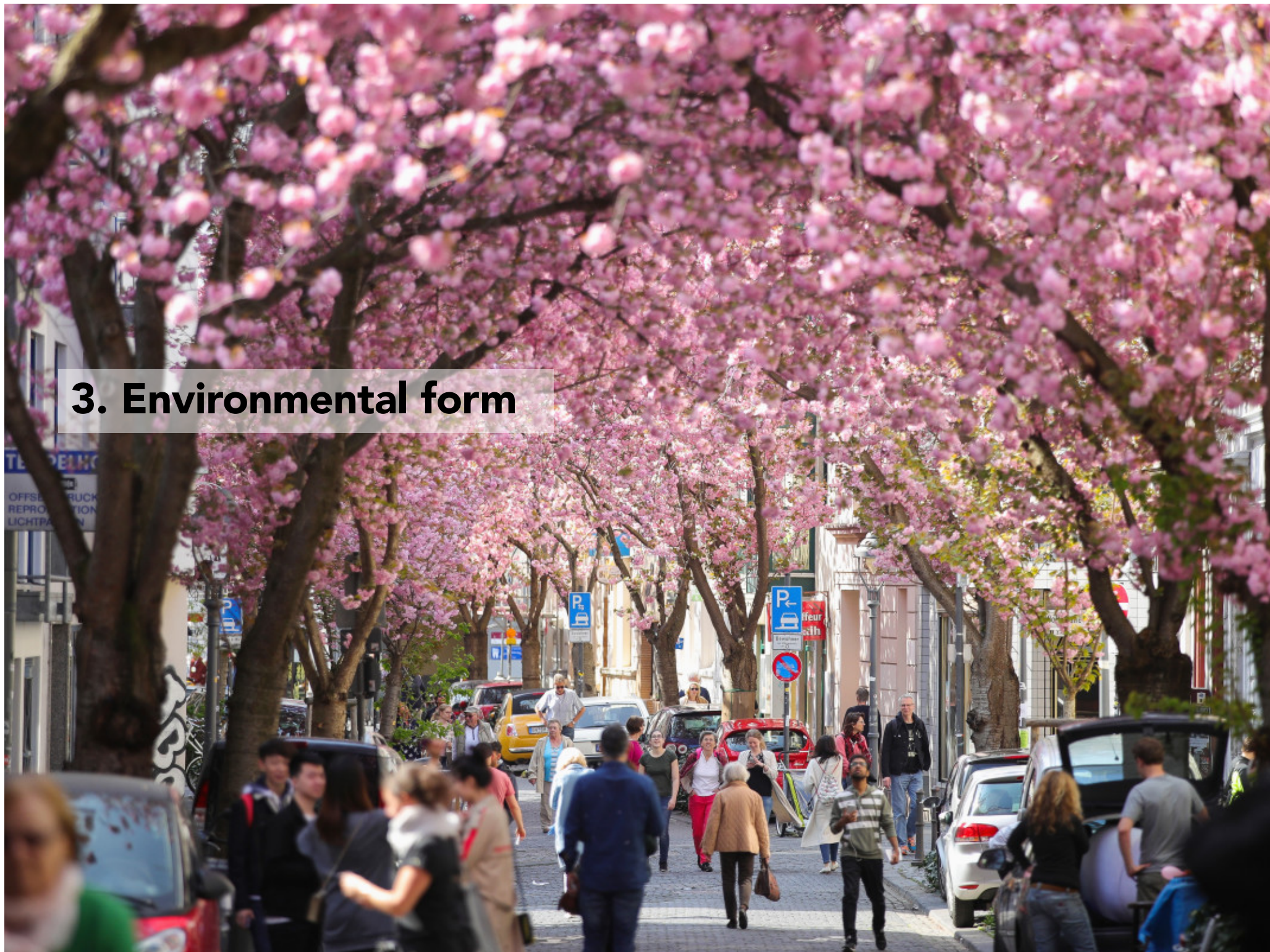
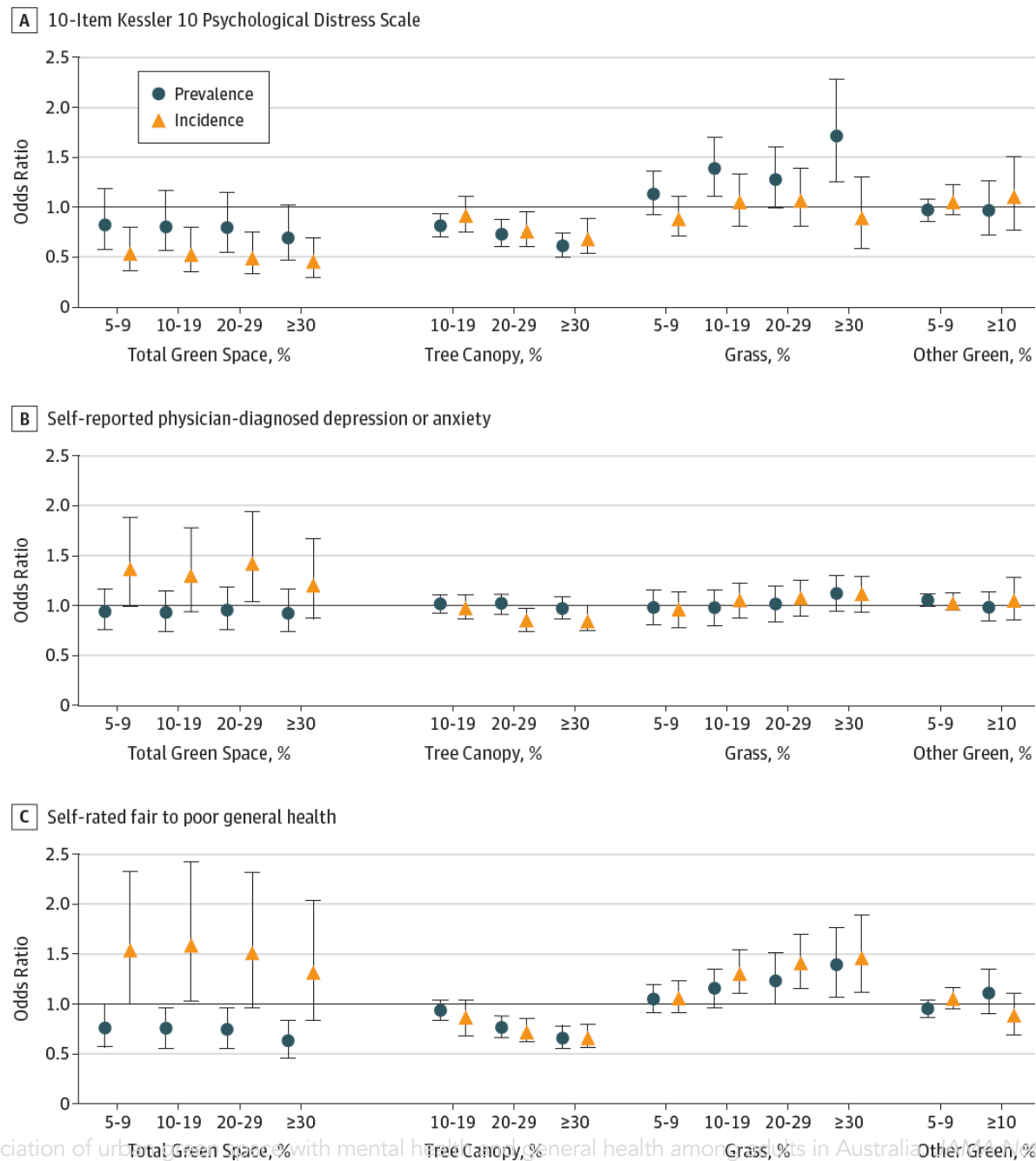
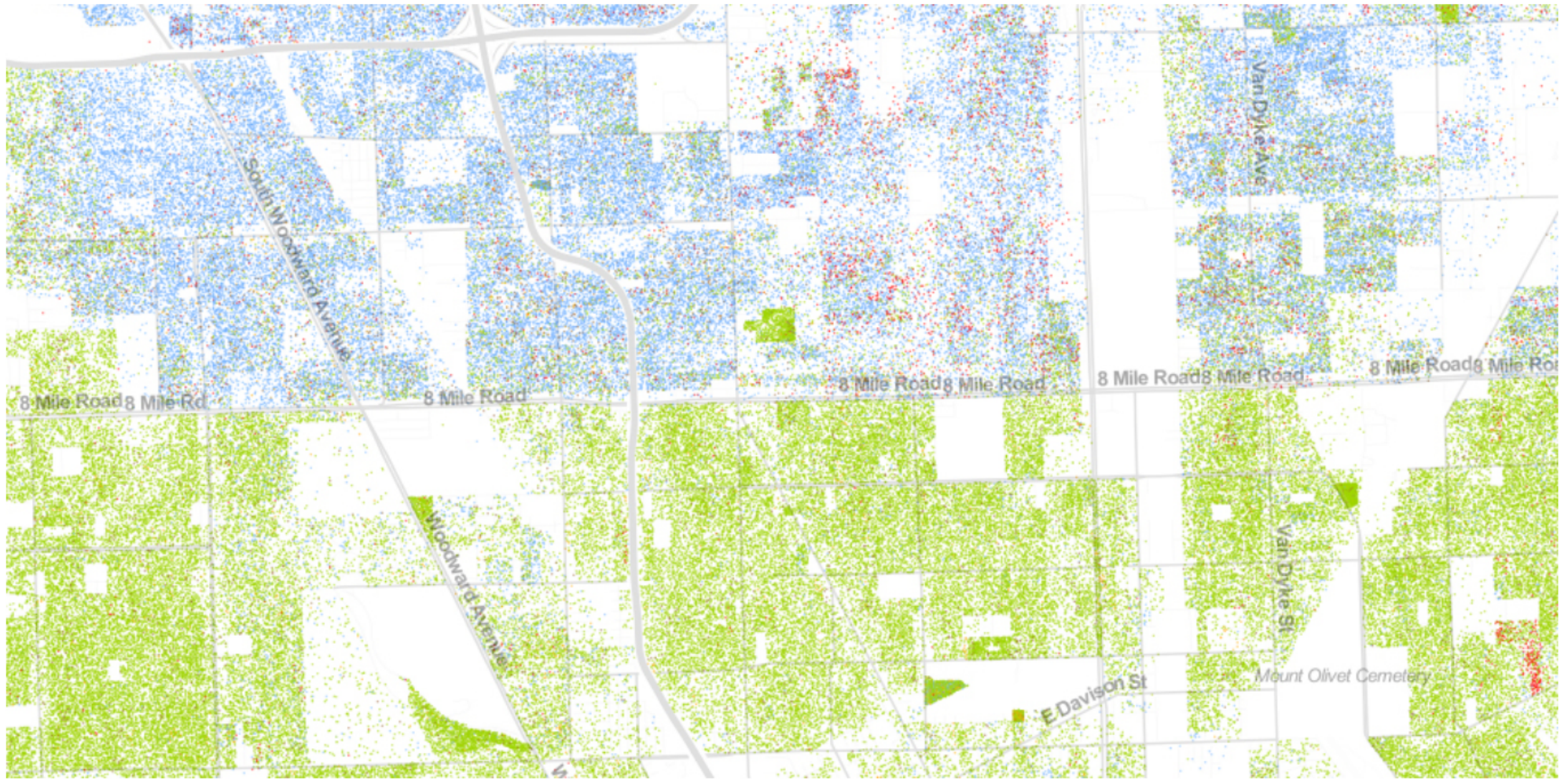


Figure. Associations Between Types of Green Space and Psychological Distress, Depression or Anxiety, and Fair to Poor General Health





In Detroit, amongst the most segregated cities in America, 8 Mile Road serves as a sharp racial dividing line.
Image: Dustin Cable

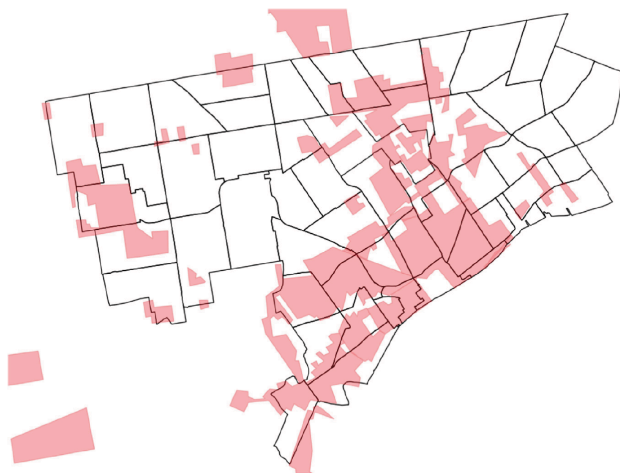


Fig. 3. Redlined areas in city of Detroit planning and development department historic neighborhood

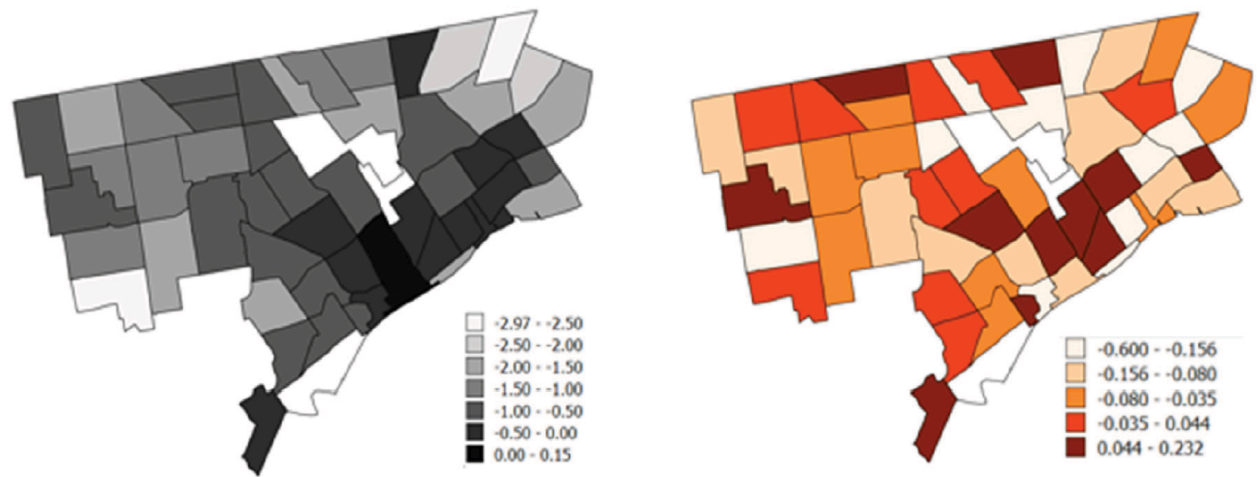


Fig. 4. A. Change in Neighborhood Foreclosure Rate 2009– 2011; Fig. 4B. Change in Prevalence of Poor Self-rated Health 2008–2012.

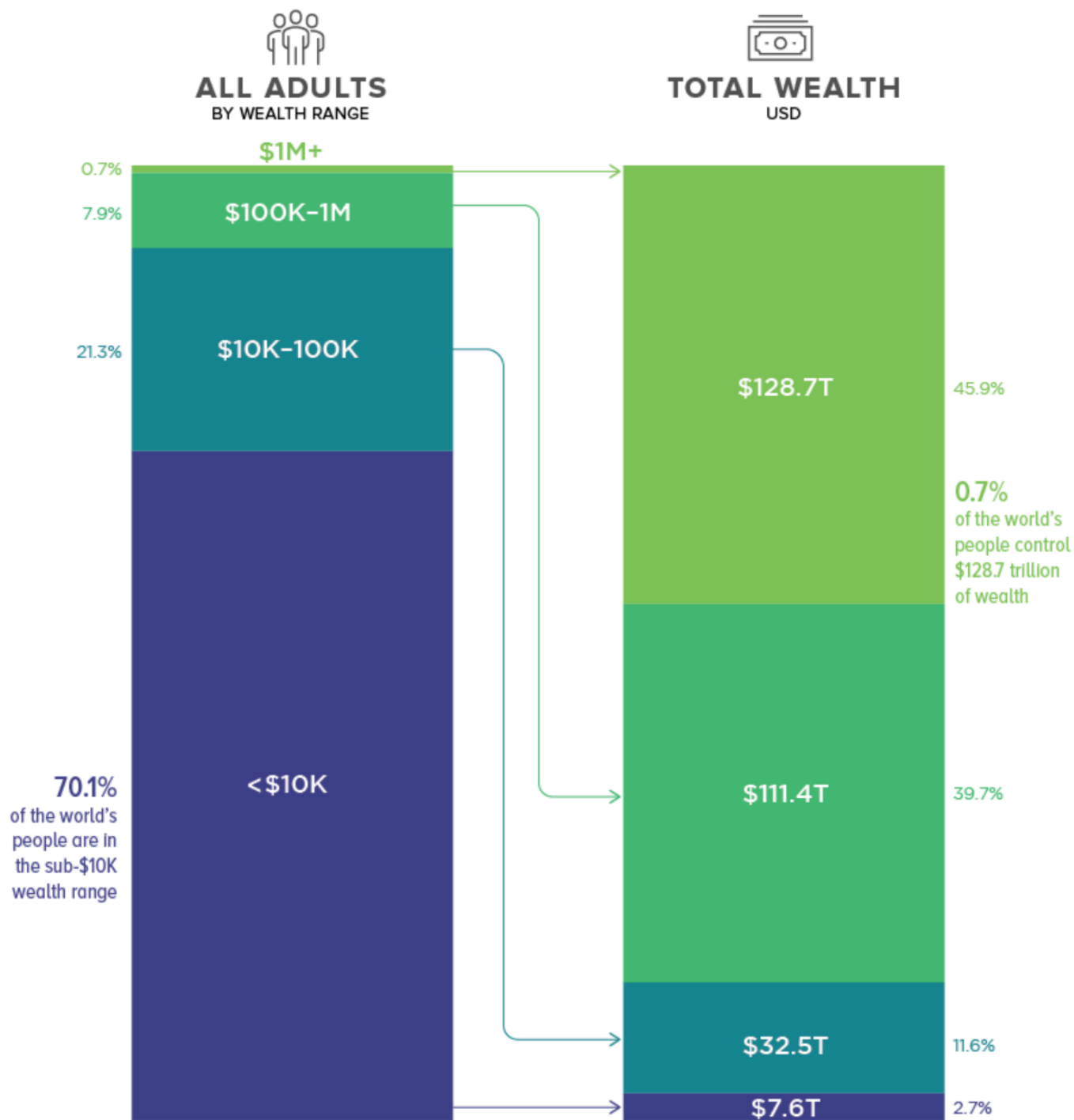
Two key considerations

A photograph of a woman with dark hair pulled back, wearing a dark grey long-sleeved shirt, holding a young child with dark, curly hair. The child is looking directly at the camera with a slight smile. The background is a rustic, weathered wooden wall. The word "Equity" is written in white, bold, sans-serif font on the left side of the image.

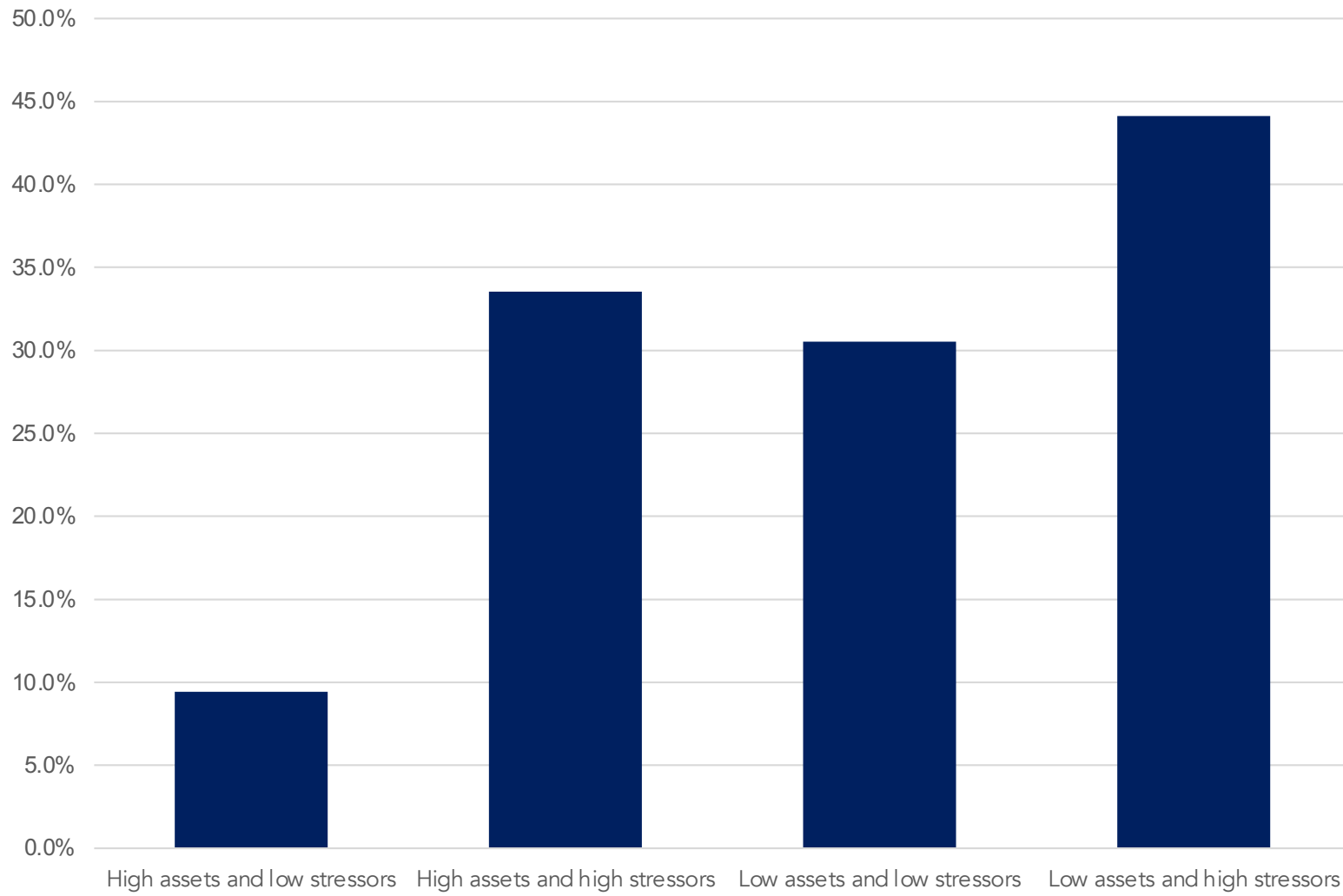
Equity

<https://www.cdc.gov/policy/hst/hi5/Incentivecredits/index.html>

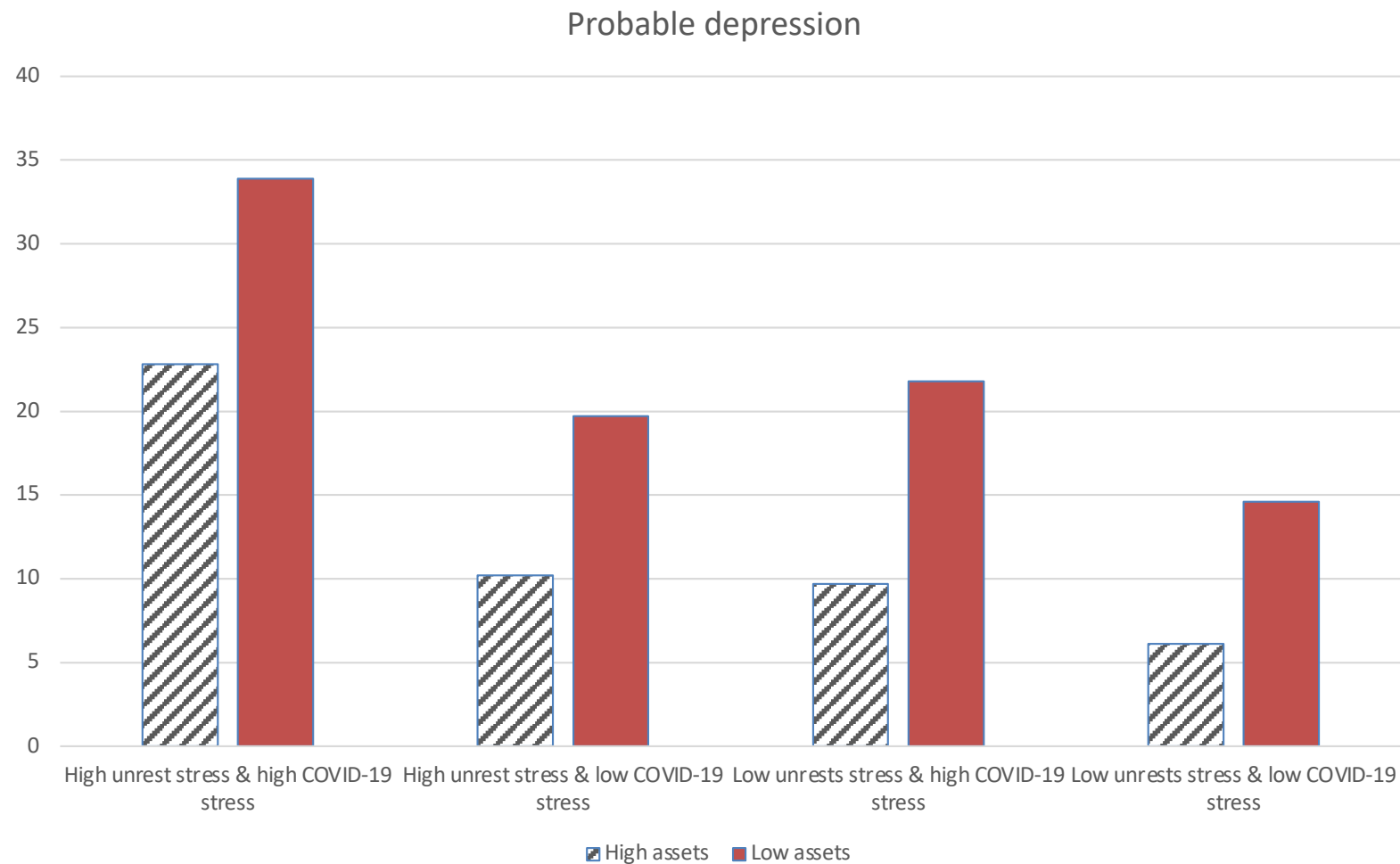
Arno, P.S., et al., *Bringing health and social policy together: The case of the earned income Incentive credit*. Journal of public health policy, 2009. 30(2): p. 198-207.



Assets, stressors, and depression during COVID-19



Prevalence of probable depression across different stressors among people with high and low assets, Hong Kong



In **the United States**, as of October 22 2020, employment rates among workers in the bottom wage quartile decreased by **21%** compared to January 2020 (not seasonally adjusted).

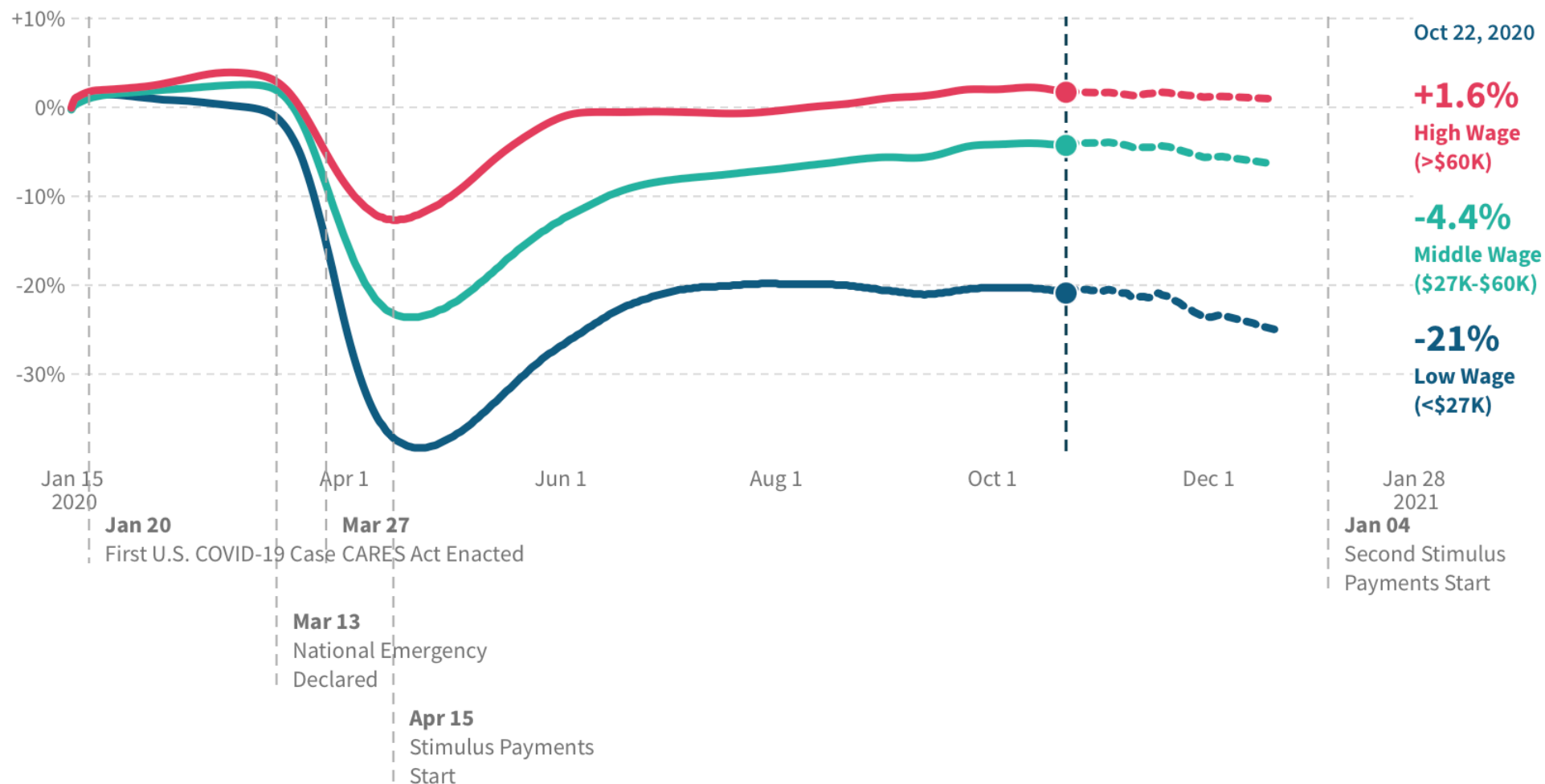


FIGURE E

Black workers are far more likely to be unemployed than white workers at every level of education

Unemployment rates by race and education, 2019

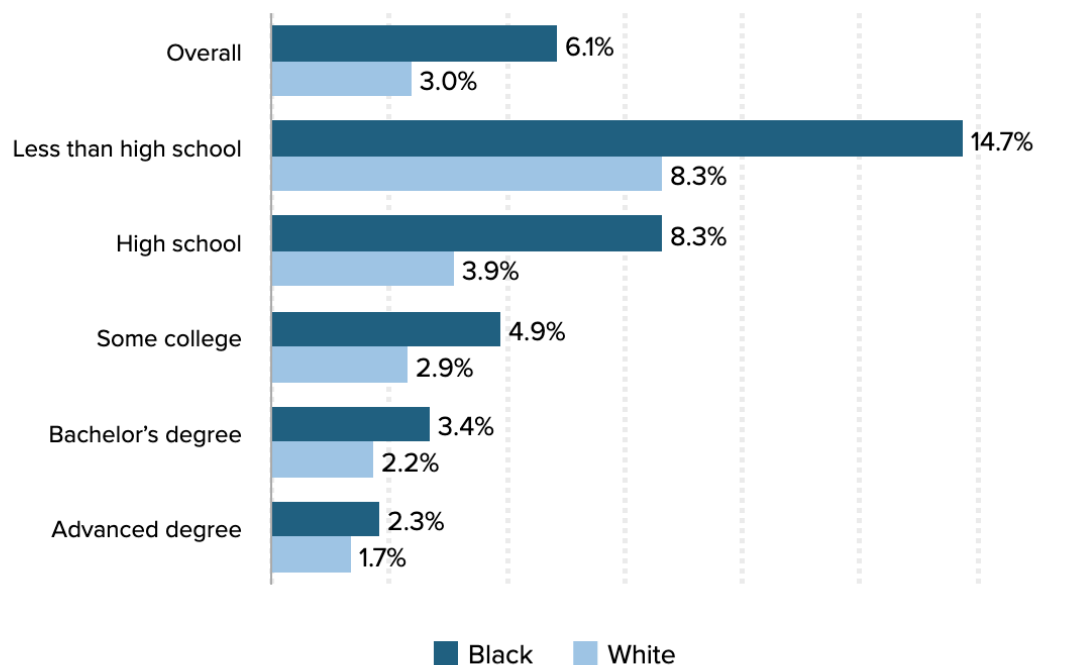
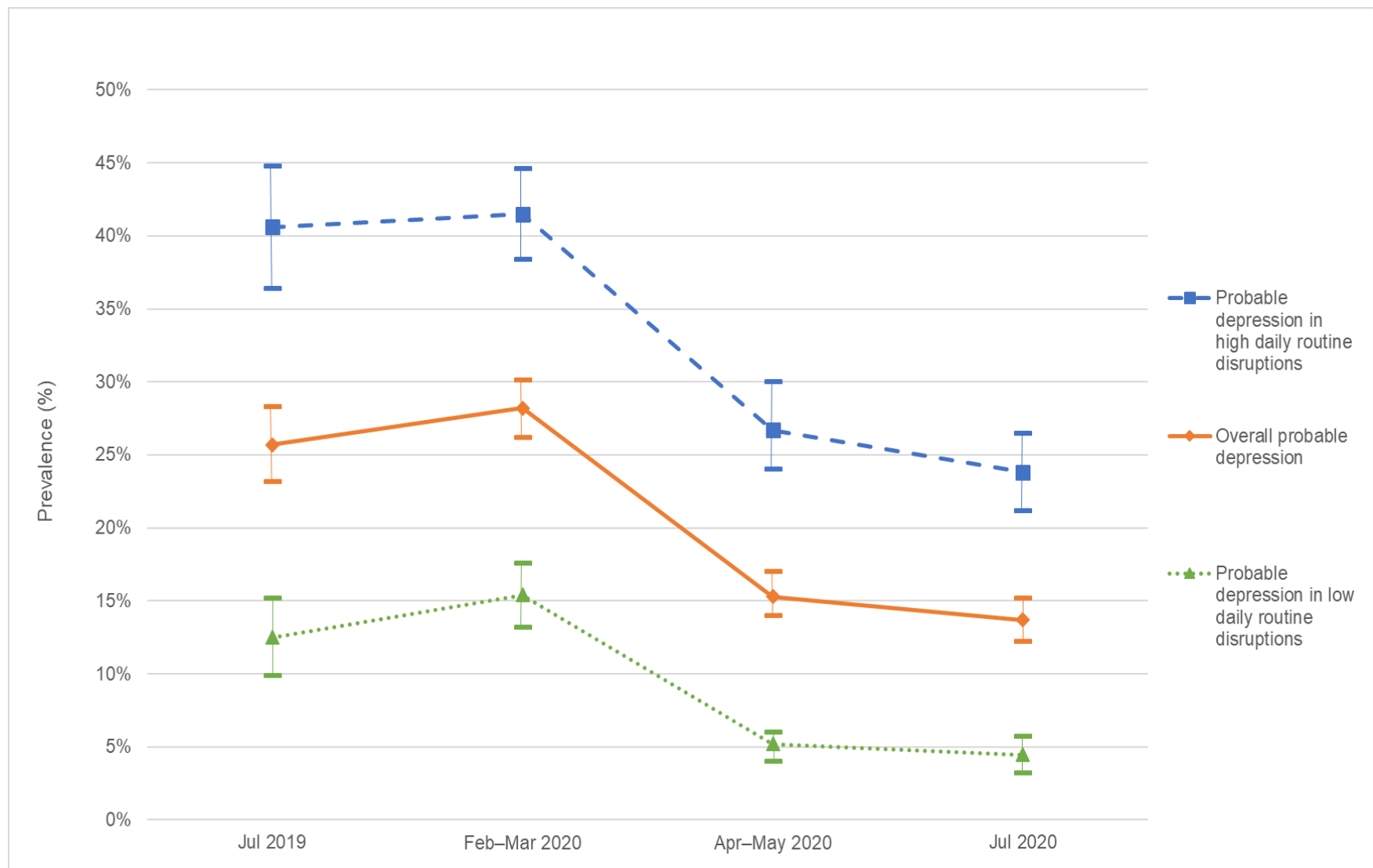


Chart Data

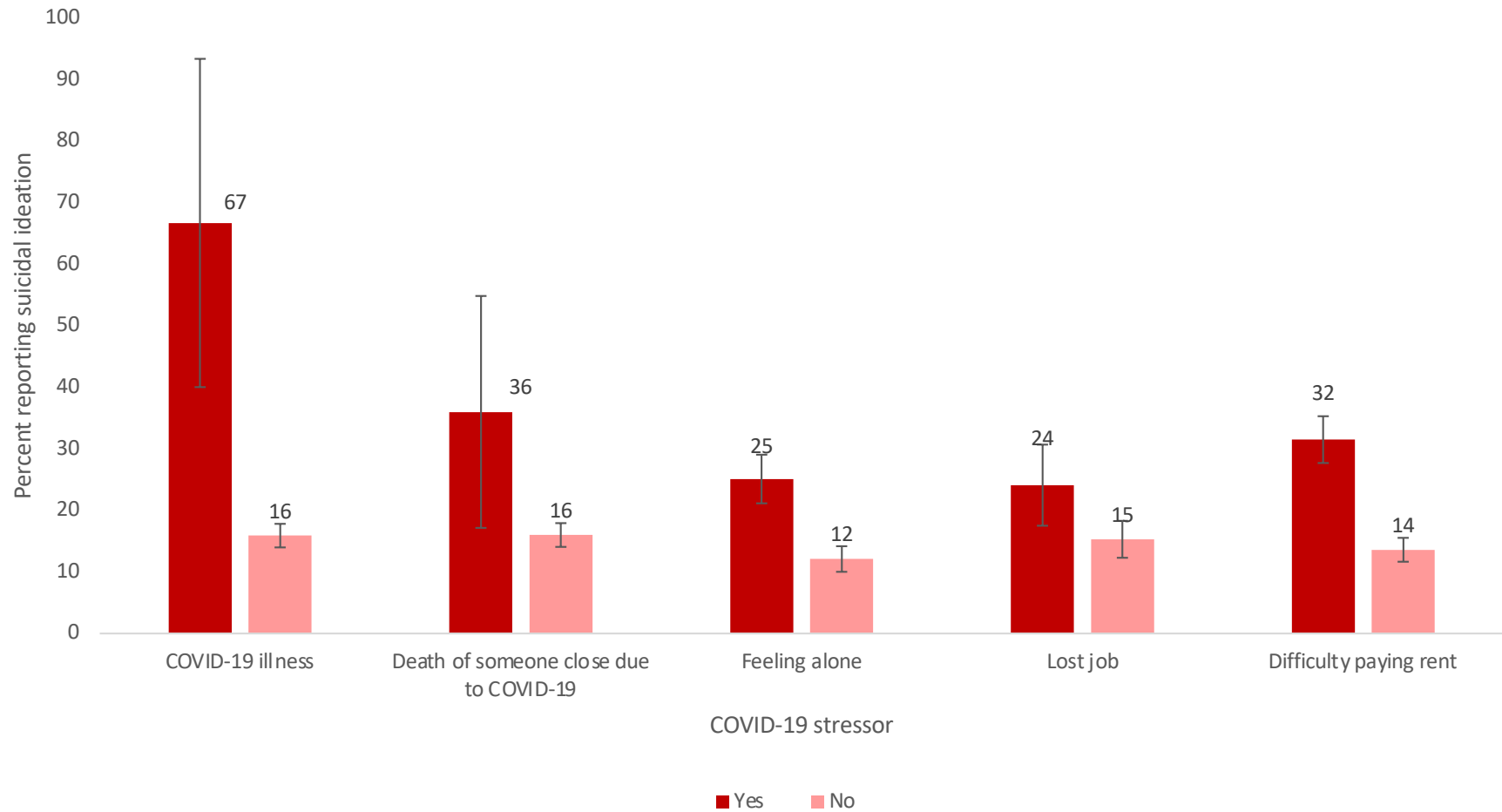
Notes: White refers to non-Hispanic whites, black refers to blacks alone. Educational categories are mutually exclusive and represent the highest education level attained for all individuals ages 16 and older.

Source: Economic Policy Institute, *State of Working America Data Library*, [Unemployment by race and education], 2019.

Economic Policy Institute



Covid-19 stressors and suicidal ideation





Methods

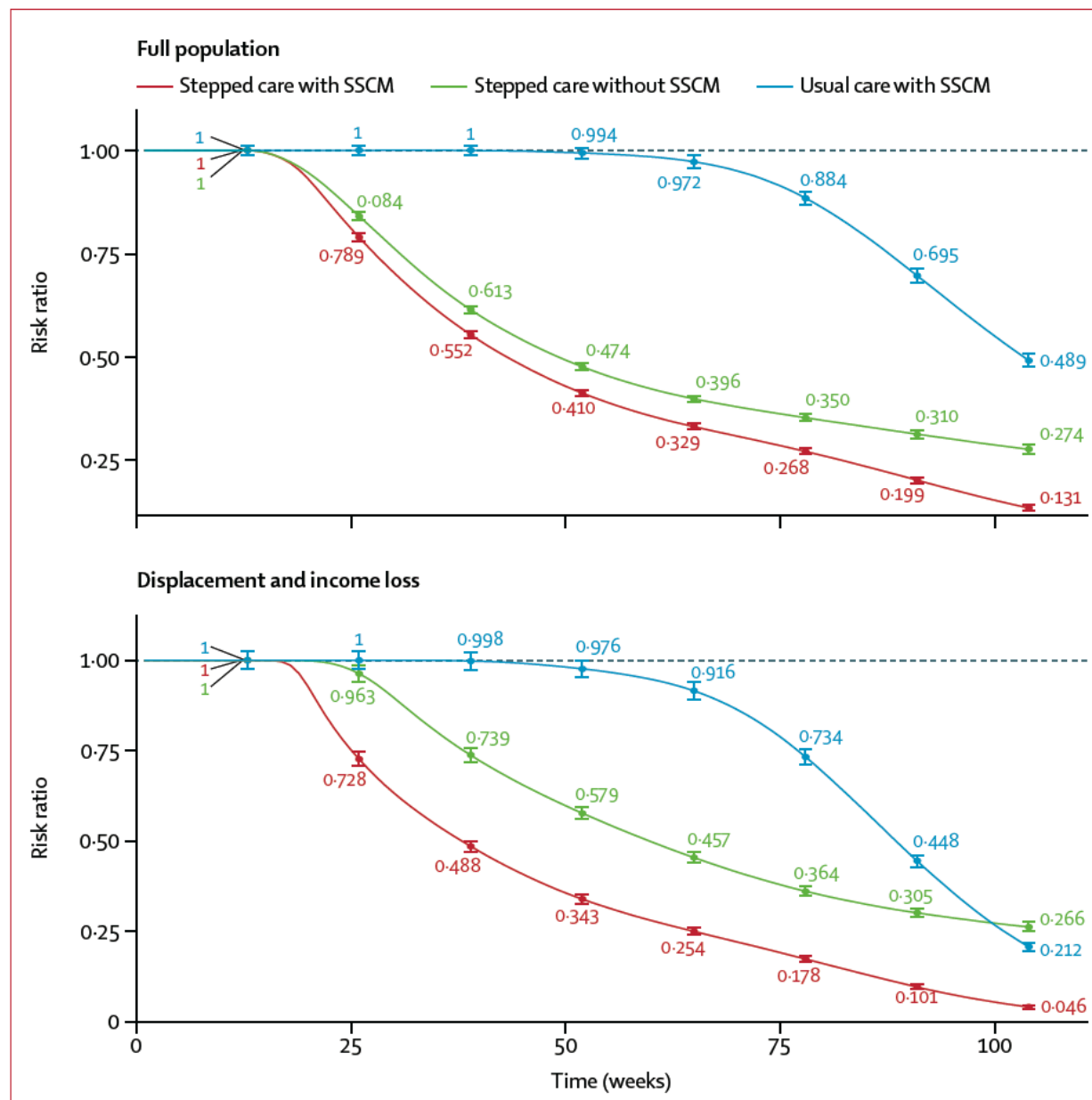
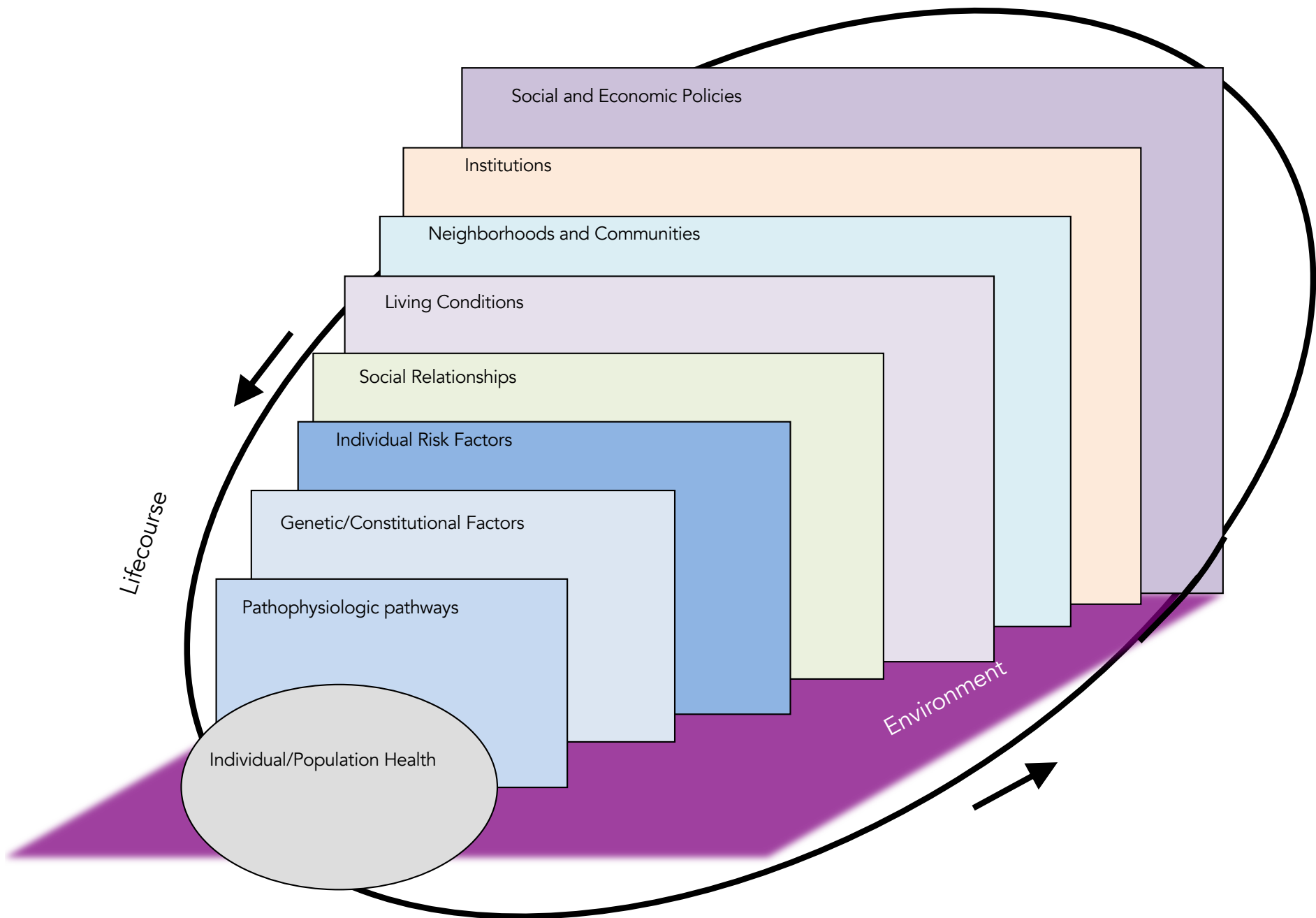


Figure 4: Risk ratios for prevalence and persistence of post-traumatic stress disorder among the full population and agents with displacement and income loss
SSCM=social services case management.









sgalea@bu.edu